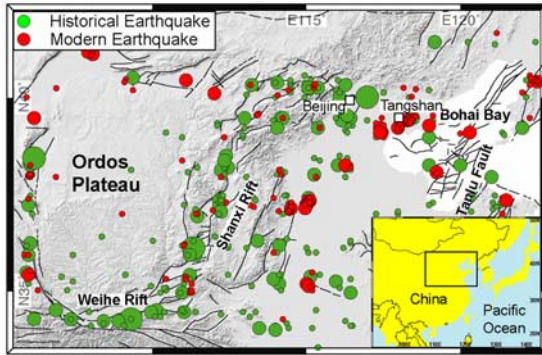


Intraplate Earthquakes in North China



Occurring within the interiors of “stable” tectonic plates, intraplate earthquakes are not readily explained by Plate Tectonics theory. Over the past 700 years ~50 large ($M_w > 6.5$) earthquakes occurred in north China, including the 1556 Huaxin event in the Weihe rift that killed 830,000 people and the 1976 Tangshan earthquake that killed 250,000.



1976 Tangshan Earthquake

NSF’s PIRE Program

The National Science Foundation’s Partnerships for International Research and Education (PIRE) aims to establish innovative models for international collaborative research and education. PIRE also intends to facilitate student participation in collaborative international research.

Student Opportunities

We seek motivated students for graduate study (M.S. & Ph.D.) and undergraduate internships. Graduate assistantships are available that will provide full financial and logistical support for thesis research. Fields of research include:

- * Earthquake Seismology
- * Active-Source Seismology
- * Marine Geophysics
- * Tectonic Geodesy
- * Earthquake Geology
- * Earthquakes & Geodynamics



Principal Investigators:

Dr. Mian Liu (PI)
Geodynamics
lium@missouri.edu



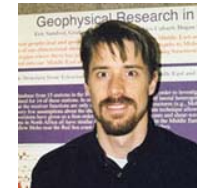
Dr. Marie-Helene Cormier (Co-PI)
marine geophysics / tectonics
cormierm@missouri.edu



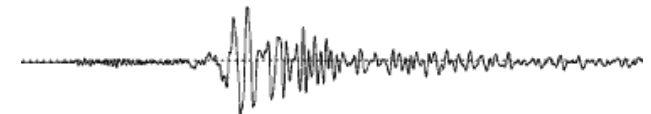
Dr. Francisco “Paco” Gomez (Co-PI)
neotectonics & tectonic geodesy
fgomez@missouri.edu



Dr. Eric Sandvol (Co-PI)
earthquake seismology
sandvole@missouri.edu



Dr. G. Randy Keller (Co-PI)
(University of Oklahoma)
active source seismology
& geophysics
grkeller@ou.edu



Summer Institute: Earthquake Studies in North China

For the third year of this project (summer 2010), we are organizing a **Summer Institute for Earthquakes and Geodynamics** to be held in China. This 4 week program will provide training for undergraduate students on earthquake studies, including ~2 weeks of fieldwork with the PIs, graduate students, and Chinese partners. Cultural opportunities are also planned.

This Summer Institute is open to undergraduates from all U.S. universities. A limited number of scholarships covering all expenses will be available. We particularly encourage applications from underrepresented minorities in the geosciences.



In addition to scientific research, students will have opportunities to receive basic training with Chinese language and culture at UMC.



For More Information:

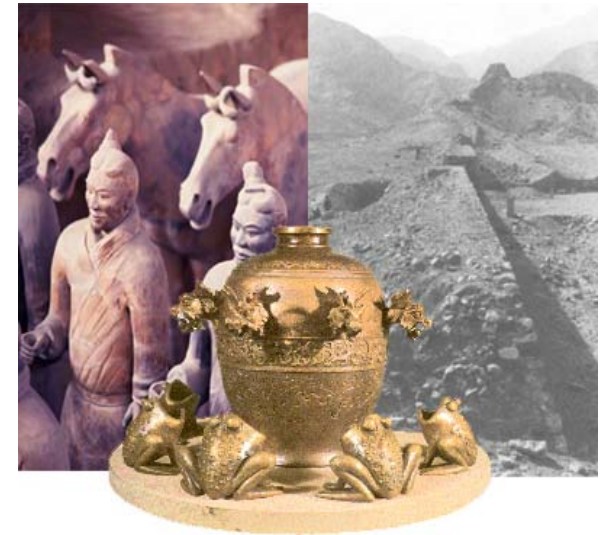
Please contact Dr. Mian Liu (lium@missouri.edu) or any of the Co-PIs at UMC.

Also, visit our website at
<http://pire.missouri.edu>



UMC Geology and the
Institute for Earthquake
Studies

Student Opportunities: Studies of Intraplate Earthquakes in North China



Sponsored by NSF's
Partnerships for
International Research
and Education (PIRE)



<http://pire.missouri.edu>